

## CORPORATE PRESENTATION

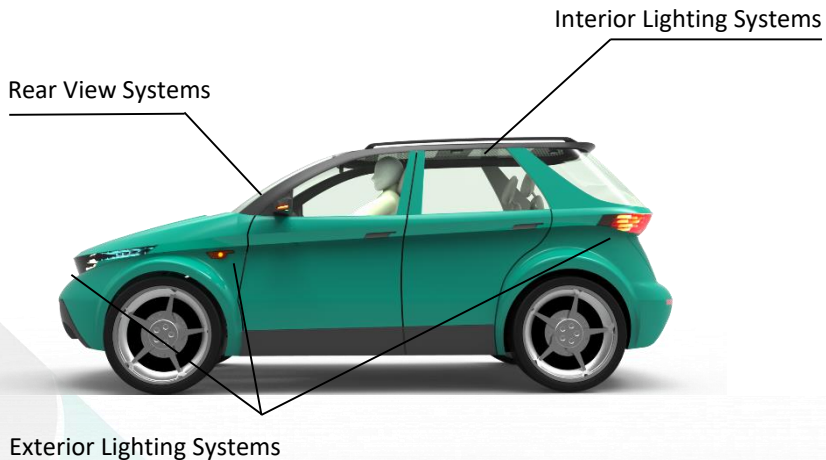


# Index

- Product Portfolio
- Create of Crash Mesh Data with HyperWorks
- Burst Analysis with Simlab
- Snap Fit Analysis with Simlab
- PCB Thermal Analysis with Simlab

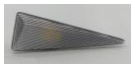
## FEKA FACILITIES







Side Indicator Lamp & Side Marker



Day Time Running Lamp (DRL)



Front Fog Lamp





CHMSL



Tail Lamp



License Plate Lamp



Rear Reflector



Rear Fog Lamp



*FEKA is FSS(Full Service Supplier)*





Rear View Systems



Interior Rear View Systems

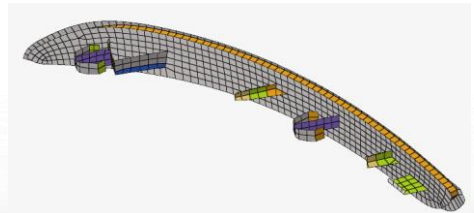
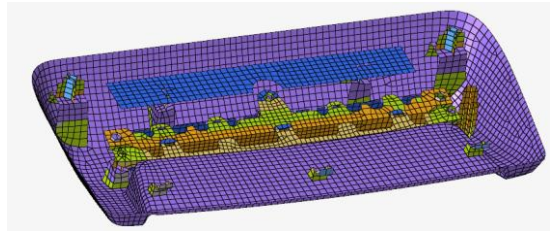
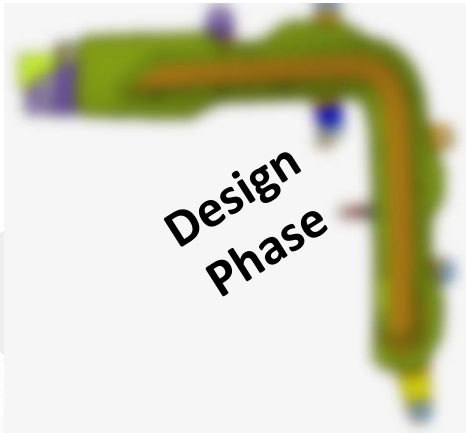
- Painted & Grained
- Electrical Heater
- Bulb & LED
- Powerfold
- w/STI
- Puddle Lamp
- Logo Lamp
- Blind Spot



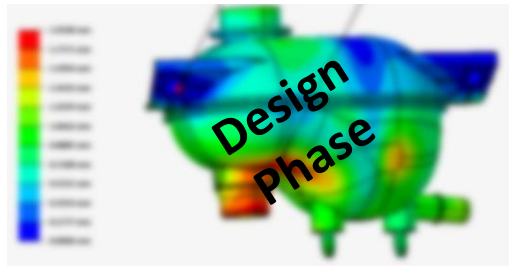
*FEKA is FSS(Full Service Supplier)*



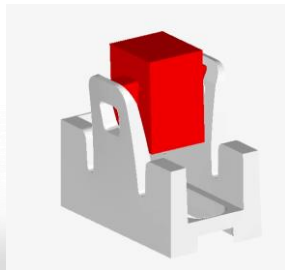
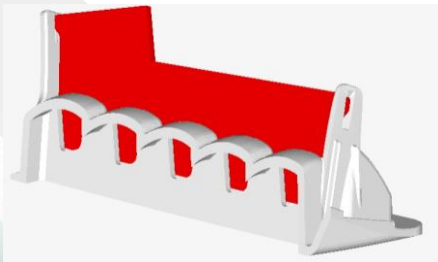
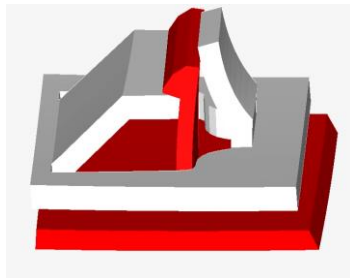
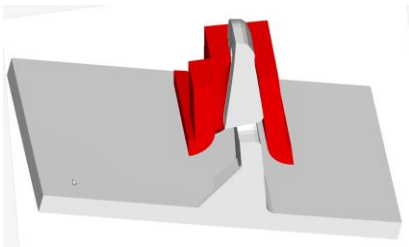
## ➤ Create of Crash Mesh Data with HyperWorks



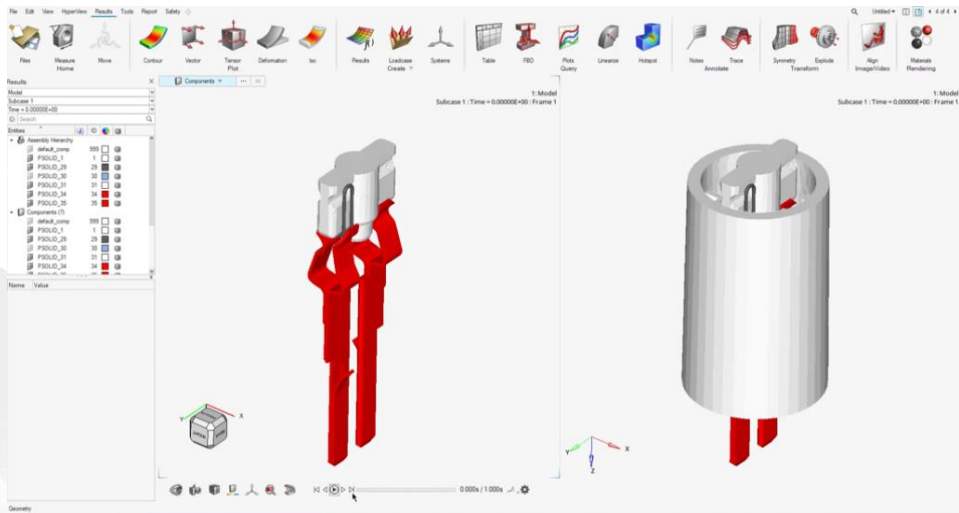
## ➤ Burst Analysis with Simlab



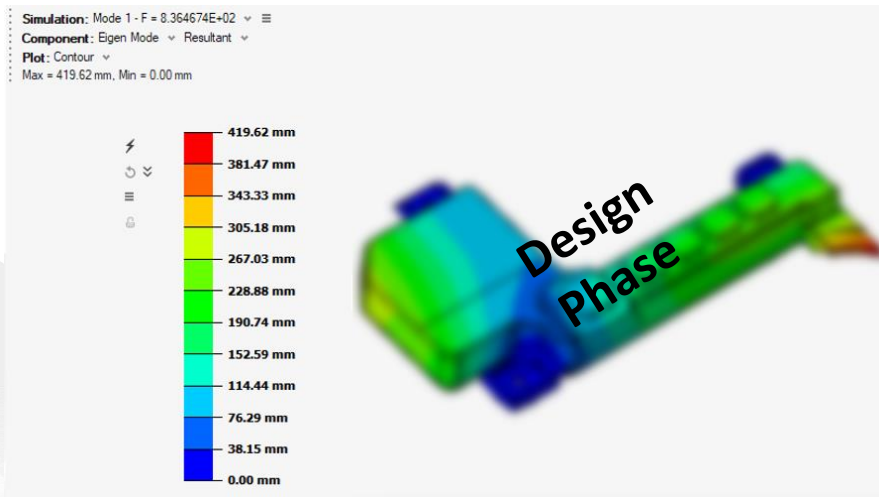
## ➤ Snap Fit Analysis with Simlab



## ➤ Bulb Assembly Analysis with Simlab

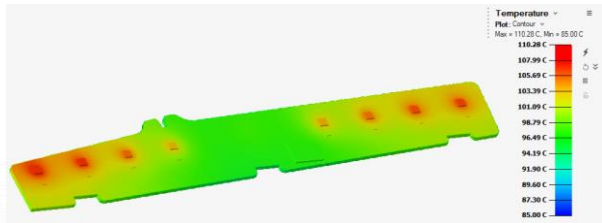
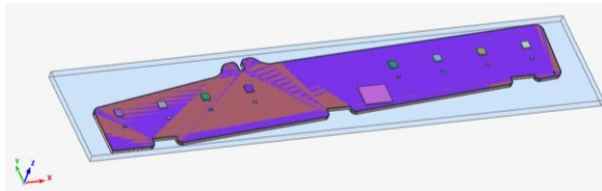


## ➤ Vibration Analysis with Simlab



## ➤ PCB Thermal Analysis with Simlab

- ☑ Solutions
  - ☑ Electronics\_Thermal
    - 🔗 Geometry
    - 🔗 Mesh
    - ☑ Geometry Refinement Control
      - 🔗 Geometry Discretization Global
      - 🔗 Mesh Settings
    - 🔗 Type : Steady State
    - ☑ Settings
    - 🔗 Solver Settings
    - ☑ Computational Domain
      - 🔗 Domain\_1
    - ☑ Boundary Conditions
      - ☑ Thermal
        - 🔗 Stop\_LED
        - 🔗 Convection\_4
    - ☑ Smart Objects
      - 🔗 Sensor
        - 🔗 Sensor\_1
        - 🔗 Sensor\_2
        - 🔗 Sensor\_3
        - 🔗 Sensor\_4
        - 🔗 Sensor\_5
        - 🔗 Sensor\_6
        - 🔗 Sensor\_7
        - 🔗 Sensor\_8
      - 🔗 Safe Margin
      - 🔗 Results
      - 🔗 Scene



THANK YOU

EXCELLENCE



' L i g h t e n s   Y o u r   V i s i o n '